



Service Description

Infosec Controls



“The microgastrinae wasp lays its eggs inside a living host. The babies as they develop then eat their way out of the still-living host.”

Predator Behavior

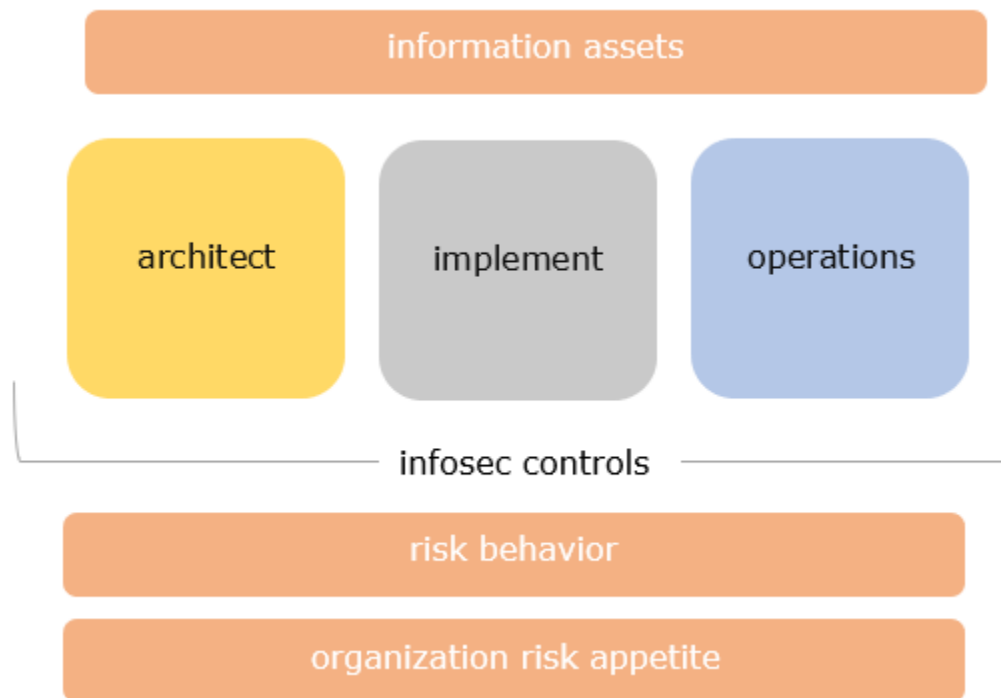
Charlotte Badger

www.charlottebadger.com



This assessment analyzes how an organization selects, applies and manages the infosec controls for its information assets. The results identify the organization's risk behavior relative to its sensitive and critical information assets.

The assessment can be integrated with our predator-prey platform and the resultant dashboard succinctly identifies an organization's high-risk behavior. Platform outputs can be used to influence and inform Enterprise Risk Management, Budget and Strategy.



Deep Analytics

We use artificial intelligence and a variety of analytics to assess how an organization approaches controls for information assets - to identify high risk behavior.

Charlotte Badger

www.charlottebadger.com

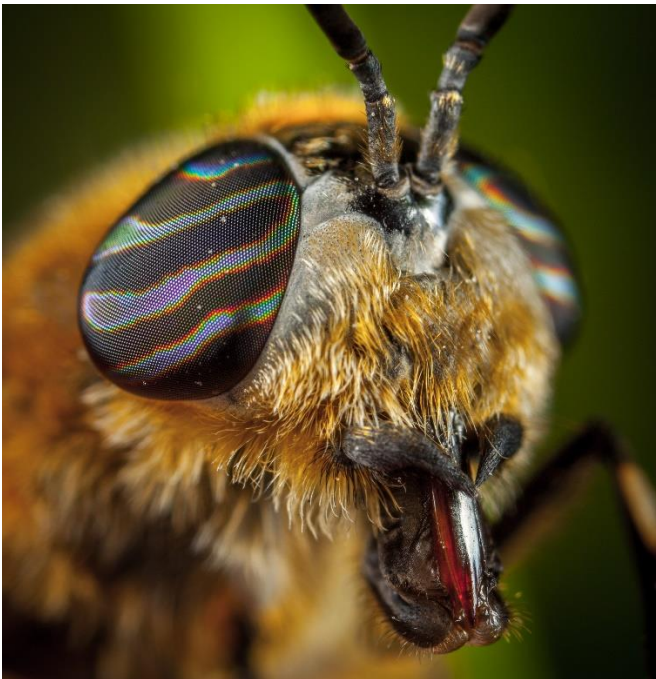


Architect

Are your controls, frameworks, architecture patterns and designs a coordinated risk model? How does cloud affect your controls?

Integration with disparate and legacy environments? Distributed processing and business logic?

These are just some of the questions our analytics answer.



Implement

Do the implemented controls comply with your architectures and designs? How is governance performed? Are you standards compliant? Is there integrated onboarding with security operations, change management et al. Are control deviations managed? Our analytics answer these questions and more to identify high risk behavior.

Charlotte Badger

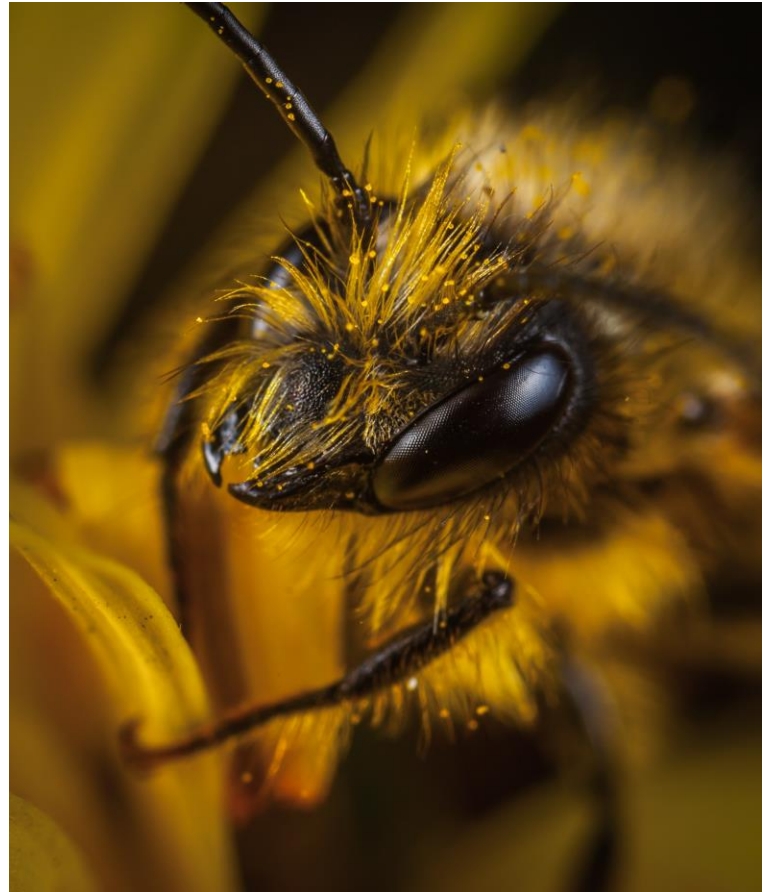
www.charlottebadger.com



Operations

Are you able to assess previously implemented controls that are no longer effective? How do you know? Are control deviations managed risks that are re-authorized periodically?

How do you manage the integration with evolving cloud platforms and distributed control mechanisms? Just some of the questions we answer in identifying high risk approaches.





The assessment is available in standard or advanced with results made available in 14 and 28 days respectively. Standard provides a snapshot with associated heat maps and analytics and advanced includes behavioral recommendations. All of which are designed to address the question of information asset controls behavior.

Infosec Management

Identifying an organization's high-risk behavior in its information asset controls is a key element to understanding risk.

	Features	Standard	Advanced
	Architect	✓	✓
	Implement	✓	✓
	Operations	✓	✓
	Behavioral Analytics	✓	✓
	Behavioral Recommendations	X	✓

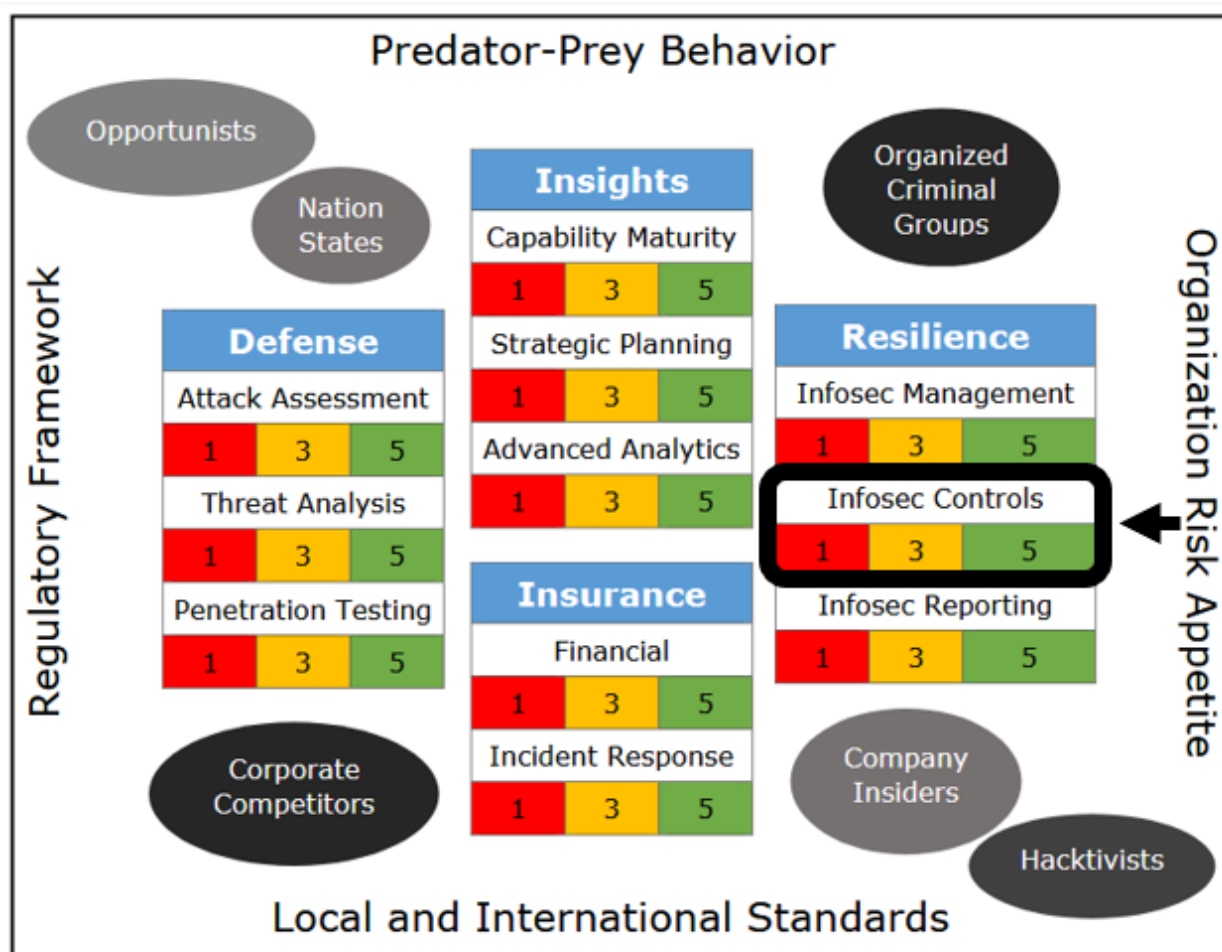
Each assessment includes a summary rating within the scale of 1 to 5 and a red-amber-green dashboard display.

Resilience		
Infosec Controls		
1	3	5



Predator-Prey Platform

The resultant summary rating can be used within the predator-prey platform to influence and inform Enterprise Risk Management, Budget and Strategy.



© www.charlottebadger.com